

ACCESSORIES & OPTIONS

FOR ROOM CONTROL



ACCESSORIES & OPTIONS

For Room Control

ROOM ENVIRONMENT SENSORS (ES)

Pace™ seamlessly integrates room thermostats, relative humidity sensors, and CO2 sensors to monitor room environment information. Room information and setpoints are reported to Pace™ using analog and/or thermistor signals. Room setpoints can be adjusted at the room level or over the building automation system.



Room Temperature Sensor



Room Temperature Sensor with Display



Room Temperature Sensor with Display and Pushbutton Setpoint Adjustment



Room Temperature and Relative Humidity Sensor



Room Temperature Sensor with Display and Relative Humidity Sensor



Room Temperature Sensor with Display, Pushbutton Setpoint Adjustment and Relative Humidity Sensor



Room Temperature Sensor with Relative Humidity Sensor and Carbon Dioxide Sensor



Room Temperature Sensor with Display, Relative Humidity Sensor and Carbon Dioxide Sensor

ACCESSORIES & OPTIONS

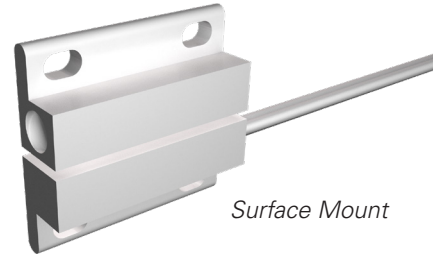
For Room Control

DOOR CONTACT SWITCHES (DCS)

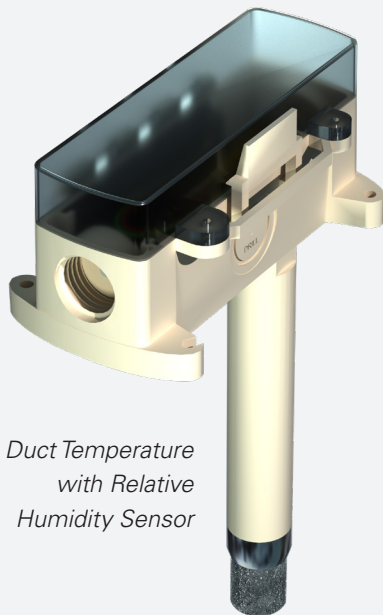
Door contact switches allow for door position monitoring and Pace™ control optimization. Local, remote or building automated system alarms can be setup to alert building staff of door status.



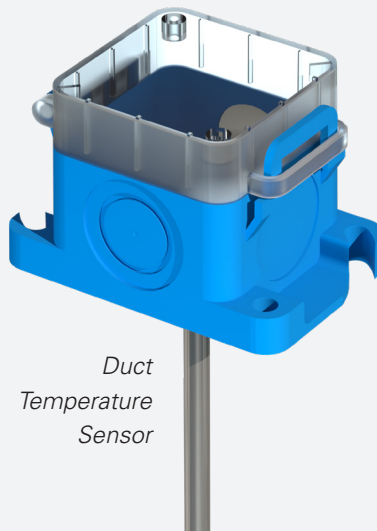
Flush Mount



Surface Mount



Duct Temperature
with Relative
Humidity Sensor



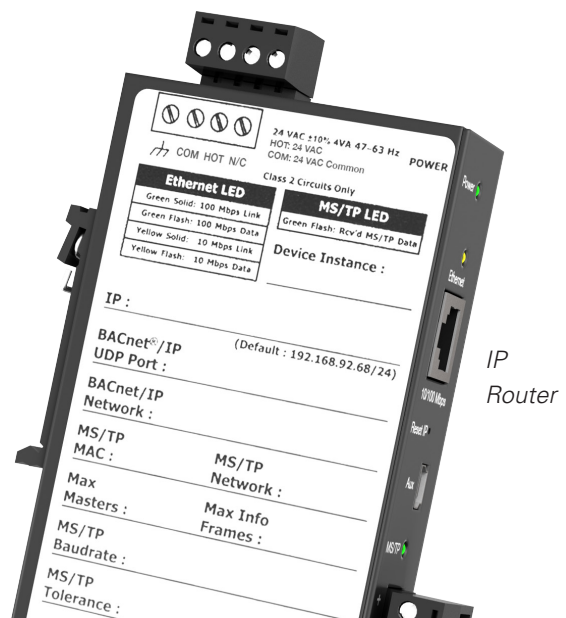
Duct
Temperature
Sensor

DUCT ENVIRONMENT SENSORS (ES)

Duct sensors are available to report duct temperature and relative humidity information. Duct information is reported to Pace™ using analog and/or thermistor signals.

BACNET MS/TP TO IP ROUTER (RTR)

The BACnet MS/TP to IP router enables the transmission of information between Pace™ BACnet MS/TP network and a third party BACnet IP building automation system.



ACCESSORIES & OPTIONS

For Room Control

SENSOR INFORMATION NETWORK

Room Pressure Sensor (SRPS)

Room pressure measurement through an industry-first maintenance-free Room Pressure Sensor (SRPS). The SRPS is highly accurate with minimal drift over time. When tested against competing technologies, including diaphragm sensors and thermal anemometers, the SRPS has proven to be the most durable pressure sensing technology. The SRPS integrates with Pace™ through the Sensor Information Network.

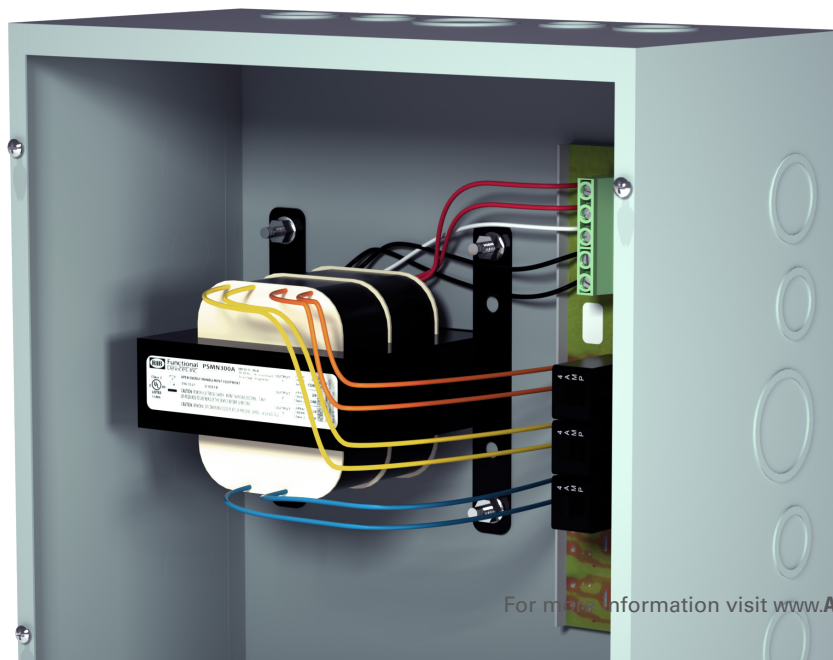
Pressure Transducer (PTX)

Utilizing technology similar to the Room Pressure Sensor (SRPS), the PTX is a highly accurate remote pressure transducer. The PTX allows for pressure measurement up to 2 in.w.c (500 pa) independent of the Pace™ pressure transducer allowing for duct pressure or airflow device flow reporting.



POWER TRANSFORMERS (VPT)

Transformers and transformer power banks are available from Antec Controls with varying VA options.





Product Improvement is a continuing endeavour at Antec Controls by Price. Therefore, specifications are subject to change without notice.

Consult your Sales Representative for current specifications or more detailed information. Not all products may be available in all geographic areas. All goods described in this document are warranted as described in the Limited Warranty.

The complete product catalog can be viewed online at AntecControls.com